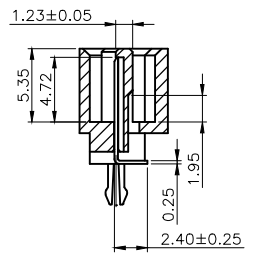
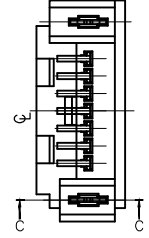
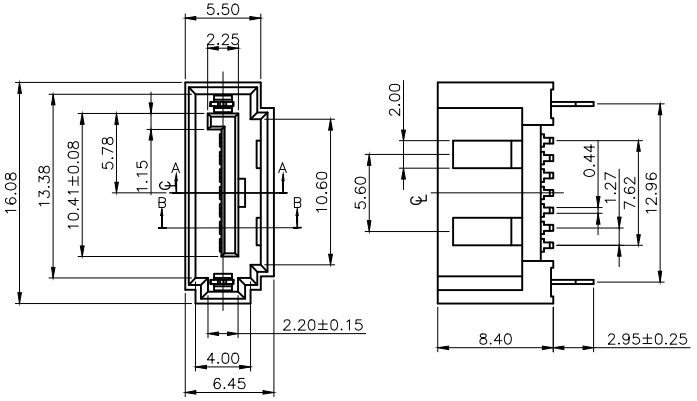
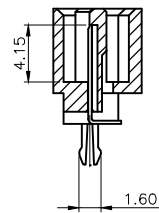


### SPECIFICATIONS

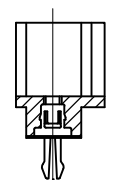
Current Rating: 1.5 Amps per pin  
 Insulator Resistance: 1000 Megohms min.  
 Contact Resistance: 30 m ohms max.  
 Dielectric withstanding: AC 500V  
 Operating Temperature: -55°C~+105°C  
 Contact Material: Brass  
 Boardlock Material: Brass  
 Insulator Material: LCP, 30% G.F., UL 94V-0  
 Finish: Gold Plating on Contact,  
 Tin on Solder Tail & Boardlock



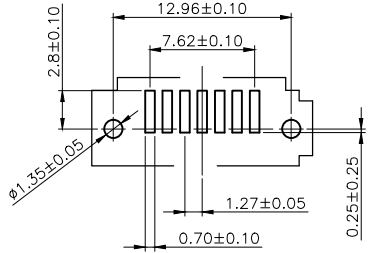
SECTION A-A



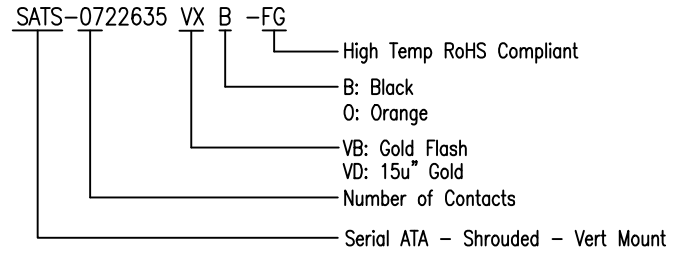
SECTION B-B



SECTION C-C



P.C.B LAYOUT



**APTOS Technology CONFIDENTIAL**  
 This document, and all information it contains, are the confidential, proprietary property of APTOS Technology. Disclosure, duplication or distribution of this document, or any information it contains, in whole or part, without prior written permission from APTOS Technology is strictly prohibited

GENERAL TOLERANCE UNLESS OTHERWISE SPECIFIED	
XXX. ± X	.XX ± 0.25
XX. ± X	.XXX ± 0.20
X. ± X	X.' ± 3'
.X ± 0.30	.X' ± X'
REV. A	DRAWN
DATE 06/27/2017	CHECKED
SCALE As shown	APPROVED
UNIT mm	SIZE A4



**SATS Series**  
 SATA-Shrouded w/Open Gaff Latch  
 PRODUCT NO. SATS-0722635VXB-FG  
 FILE NAME: SATS-0722635VXB-FG LF APD.DWG